

P J C

Light Studio

2/F, Charterhouse Square  
London EC1M 6AX  
United Kingdom

Telephone: +44 (0)20 7837 3888  
Email: design@pjclightstudio.com

Note:

- This drawing is to be read in conjunction with PJC Light Studio specifications and load schedules.
- D1

C-01

- Luminaire type  
- Lighting zone and Control channel no.
- PJC Light Studio zone references (note 2 above) are shown for control intent only and are not to be used as the configuration of electrical wiring. All wiring diagrams and electrical engineering to be by the Electrical Consultant/Contractor.
- All dimensions to be verified on site.
- Precise setting out of all light fitting locations are to be verified against the architects drawings and fully coordinated with other services.

6. THIS IS A DESIGN INTENT DRAWING ONLY AND SHOULD NOT BE ISSUED AS A CONSTRUCTION DRAWING. IT IS INTENDED TO EXPRESS THE LIGHTING DESIGN INTENT AND IS NOT FOR CONSTRUCTION. REFER TO ASSOCIATED ARCHITECTURAL AND ELECTRICAL ENGINEERING DOCUMENTATION FOR CONSTRUCTION INFORMATION.

Confidentiality Notes:  
Please be notified that this drawing and the design concept reflected thereon is confidential and the property of PJC Light Studio. You are hereby notified that any disclosure, copying or distribution is strictly prohibited.

© Copyright 2025 PJC Light Studio  
FOR LIGHTING INFORMATION ONLY

DRAWING ISSUE

Date	Rev	Description
2025.10.23	-	Client Tender Issue

PROJECT NAME

The Tower of London

ARCHITECT

Jamie Fobert Architects

CLIENT

The Tower of London

DRAWING TITLE

The Reveller  
Low Level Lighting Plan

PROJECT NO.

612

SCALE

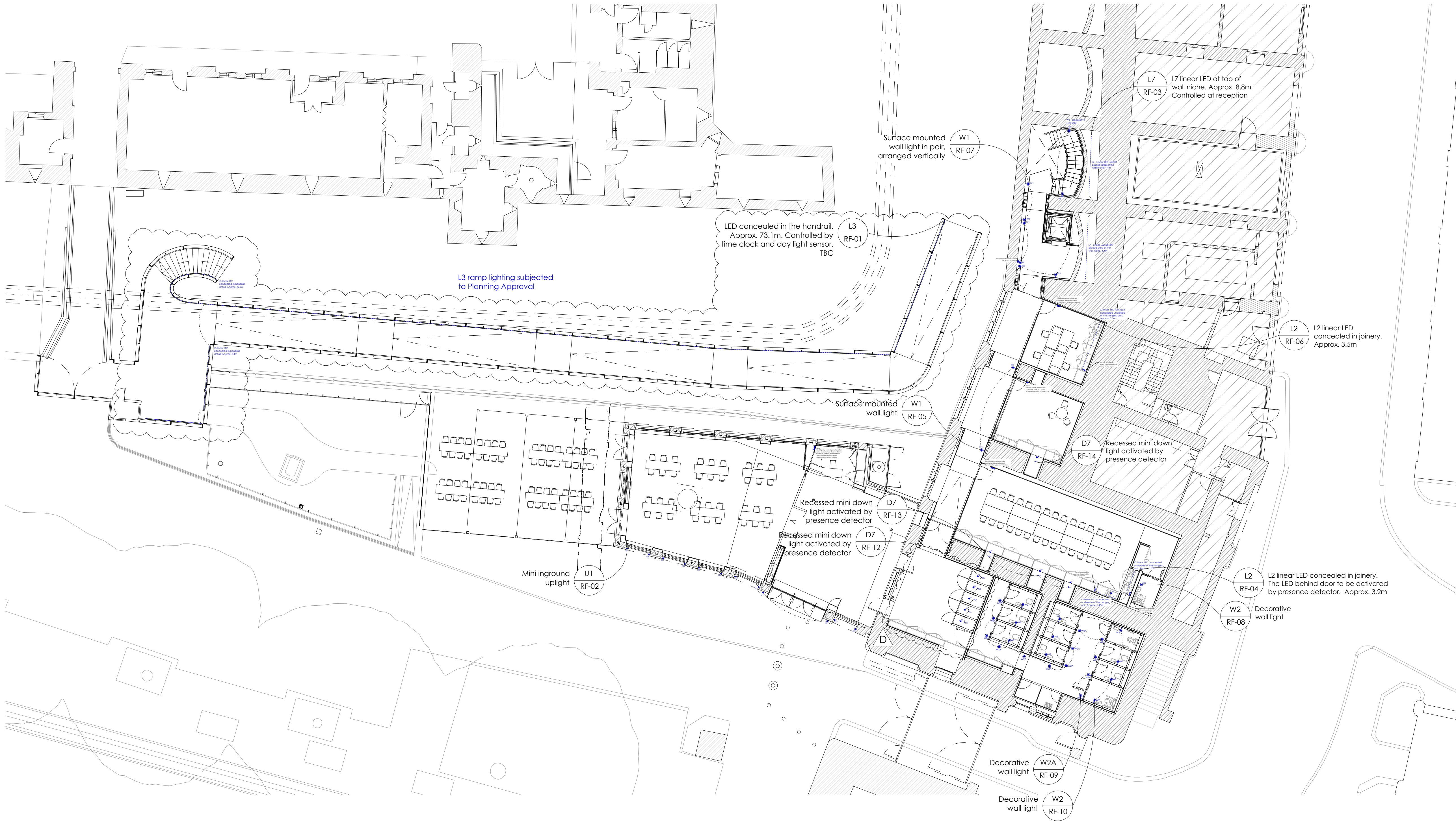
1:150@A1  
DRAWN

DRAWING NO.

PJC\_612\_P21

APPROVED  
TL

PC/AL  
REVISION



Important notes:

- All LED drivers & associated components to be fully & easily accessible.
- Refer to PJC Luminaire Specification for maximum driver distance from the LED luminaire.
- Precise Lighting Switch and dimmer switch location to be agreed.
- Precise Presence Detector location and quantity to be finalised by Harley Haddow.